

[www.samshikhar.com](http://www.samshikhar.com)

# PORTFOLIO

# About SAM-Shikhar Infrastructure

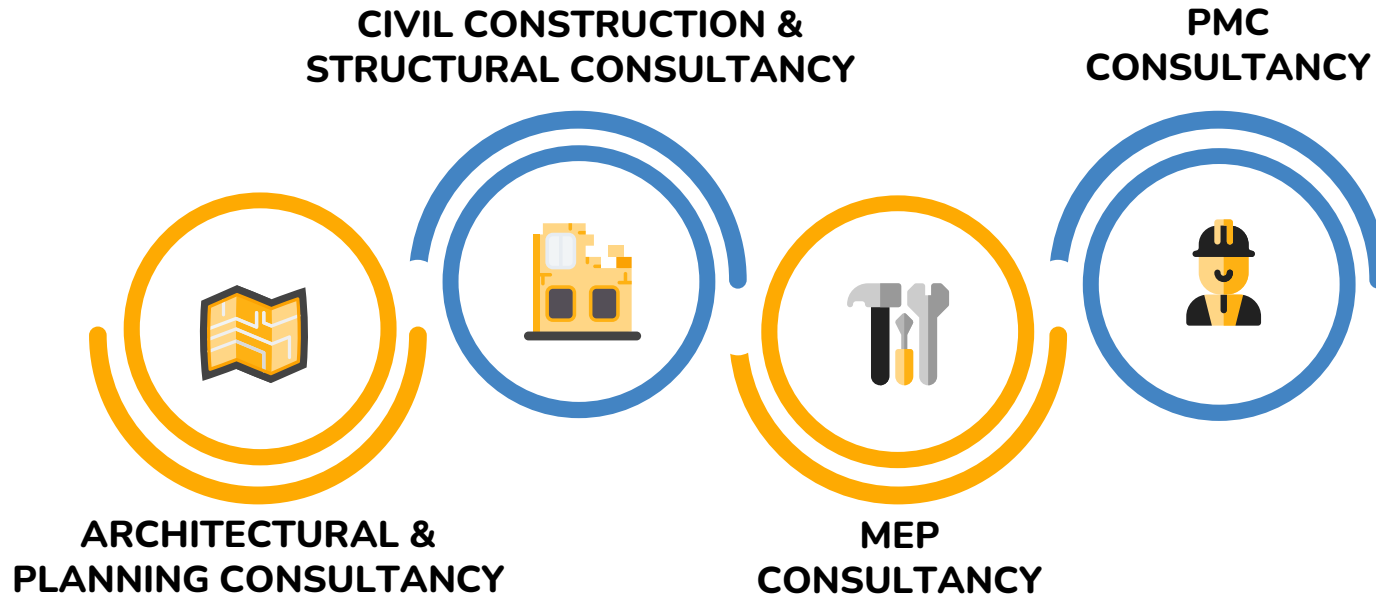
**SAM-Shikhar Infrastructure** is an engineering company based in Ahmedabad, Gujarat, India.

Since its inception in the year **2010**, the company has been associated with various Private client and Government Departments and delivered consultancy and construction services for projects related to various Residential, Commercial, Industrial, Institutional and Public buildings, Resorts, Road and Bridge, Marine structure, Sewerage Networks, Storm Water Pipeline works, Irrigation Networks and many more.

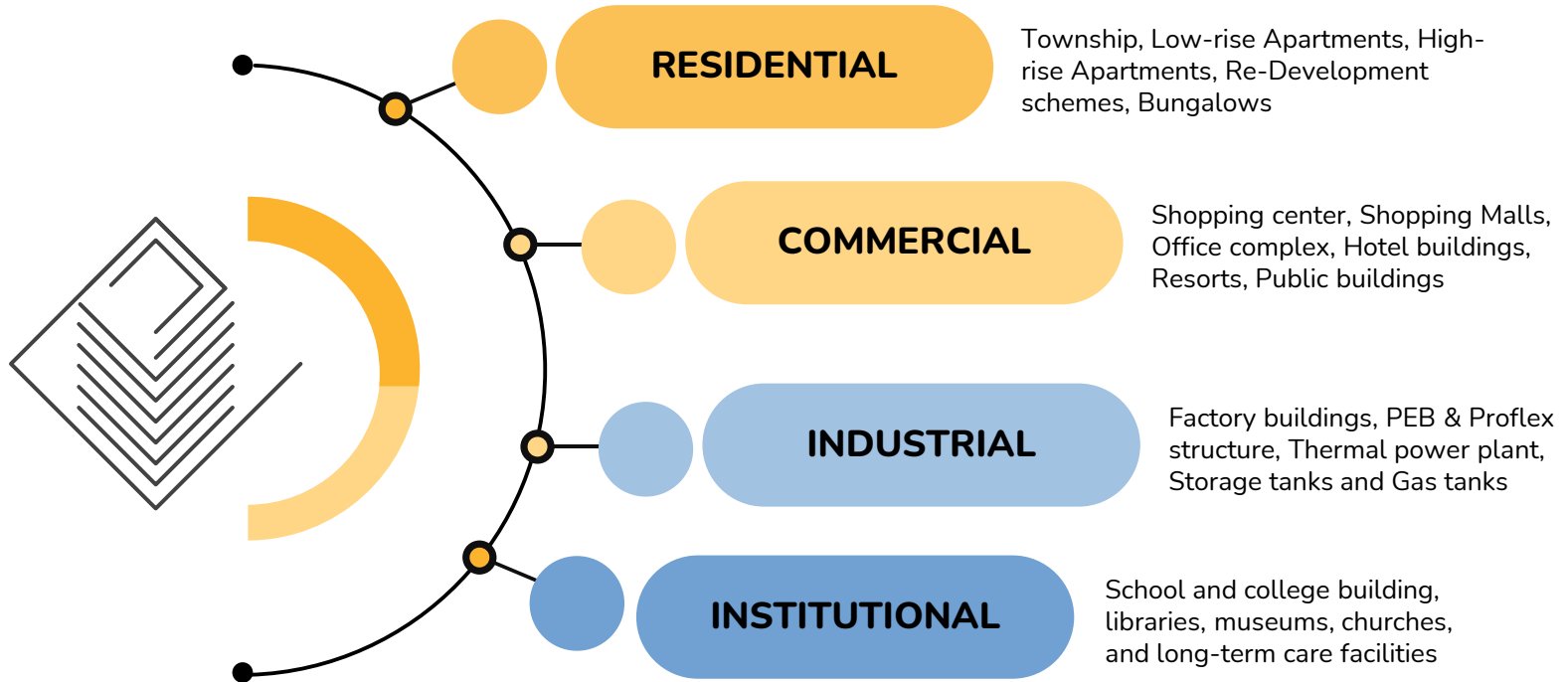
**Mission:** Providing high end engineering Services with innovation, creativity and superior quality.

**Vision:** To become India's most renowned engineering company providing various kinds of services like Architecture, Planning, Designing, PMC and EPC projects under one roof.

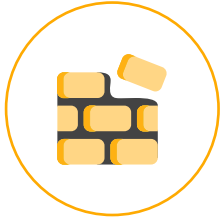
# OUTLINE OF OUR SERVICES



# OUR PROFICIENCIES



# OUR SERVICES



**CONSTRUCTION**



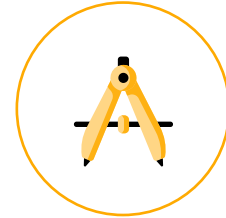
**FEASIBILITY STUDY &  
CONCEPTUAL PLANNING**



**PRELIMINARY  
DESIGN**



**PRELIMINARY REPORT  
AND BUDGET ESTIMATES**



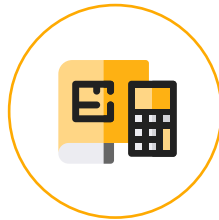
**TENDER  
DRAWINGS**



**BILL OF  
QUANTITIES**



**TENDER  
SPECIFICATIONS**



**COST  
ESTIMATE**



**DETAILED PLANNING  
AND DESIGNING**



**DETAILED  
DRAWINGS**

# CORPORATE HOUSE AT PALDI

Area – Approx 35000 sqft

Project cost – Rs. 25.00 cr



# OFFICE COMPLEX AT MANAPPARAI

Area – Approx 2,00,000 sqft

Project cost – Rs. 38.00 cr

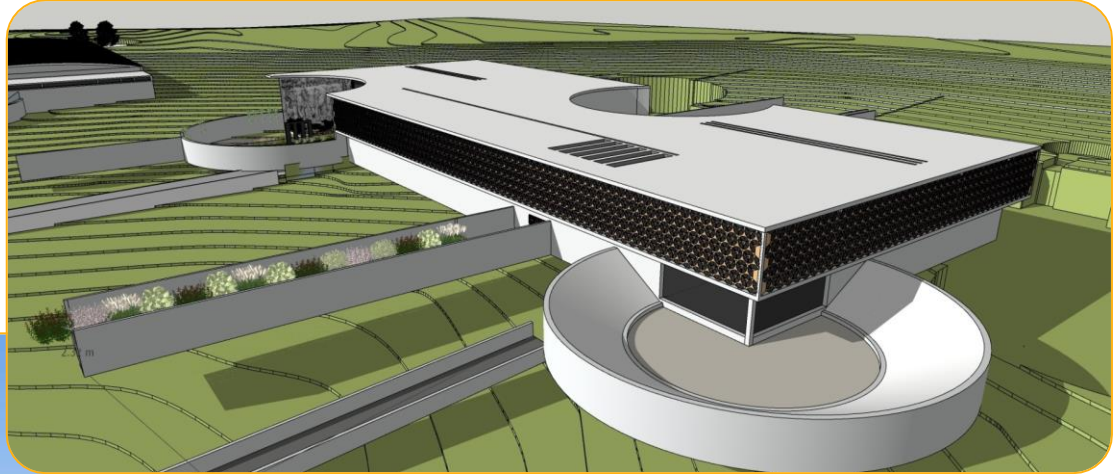




# BIODIVERSITY CONSERVATION CENTRE AT KEERIPARA

Area – Approx 1,50,000 sqft

Project cost – Rs. 48.00 cr

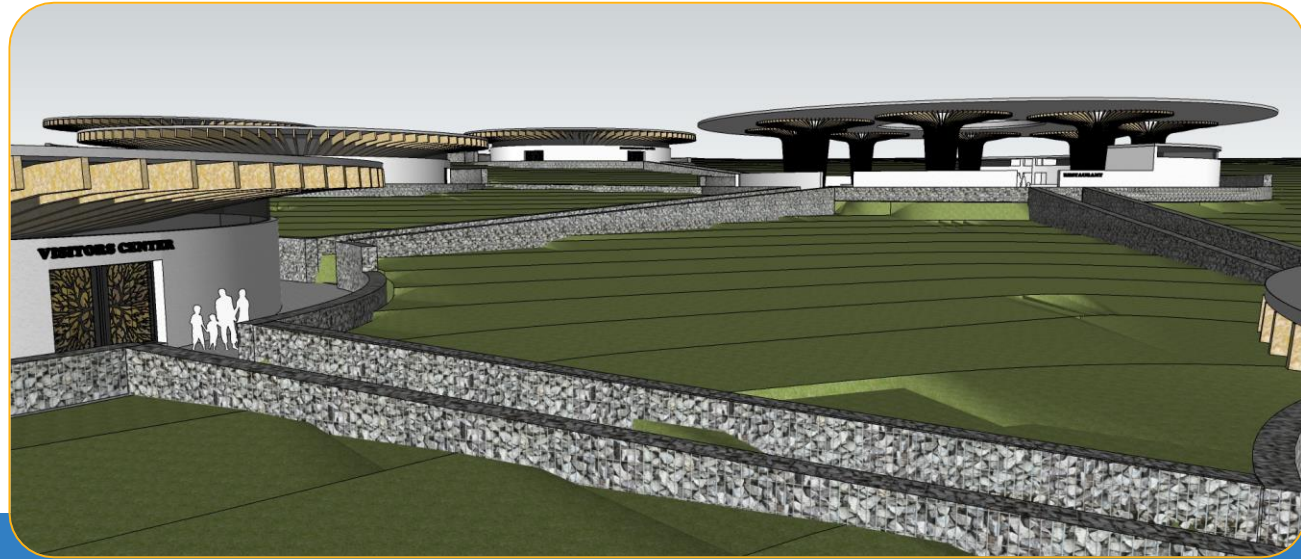




# BIODIVERSITY CONSERVATION CENTRE AT KEERIPARA

Area – Approx 1,50,000 sqft

Project cost – Rs. 8.00 cr



# WETLAND ECOLOGICAL PRESERVATION CENTRE AT PICHAVARAM

Area – Approx 8,00,000 sqft

Project cost – Rs. 95.00 cr



# ECO-LODGE - KOLLI HILLS PROJECT

Area – Approx 15,00,000 sqft

Project cost – Rs. 7.50 cr



# WARE HOUSE – PEB – AT DAHEJ, BHARUCH

Area – Approx 35,000 sqft

Project cost – Rs. 4.25 cr





# ASHRAM AND TEMPLE AT SANAND, AHMEDABAD

Area – Approx 2,00,000 sqft

Project cost – Rs. 19.11 cr





# MUNICIPAL OFFICE AT THANJAVUR







# OFFICE AT BOPAL





# AISA ENGLISH SCHOOL AT MEHEMDAVAD







# TIRUVANNAMALAI BUS STATION



# COMMERCIAL BUILDING AT ASHRAM ROAD





# HIGHRISE BUILDING AT GURUKUL



# HIGHRISE BUILDING AT CHANDKHEDA





# VEGETABLE MARKET AT KULITHURAI





# INDUSTRIAL BUILDING AT KALOL







# INDUSTRIAL BUILDING AT NARODA



# ROAD BRIDGE AT RAJKOT - AHMEDABAD HIGHWAY



# RAIL BRIDGE AT DHANDHUKA





# RESIDENTIAL BUNGALOW AT BOPAL





# RESIDENTIAL BUNGALOW AT JODHPUR



# RESIDENTIAL BUNGALOW AT PALODIA





# RESIDENTIAL BUNGALOW AT GOTA



# RESIDENTIAL BUNGALOW AT JODHPUR



# RESIDENTIAL BUNGALOW AT BOPAL



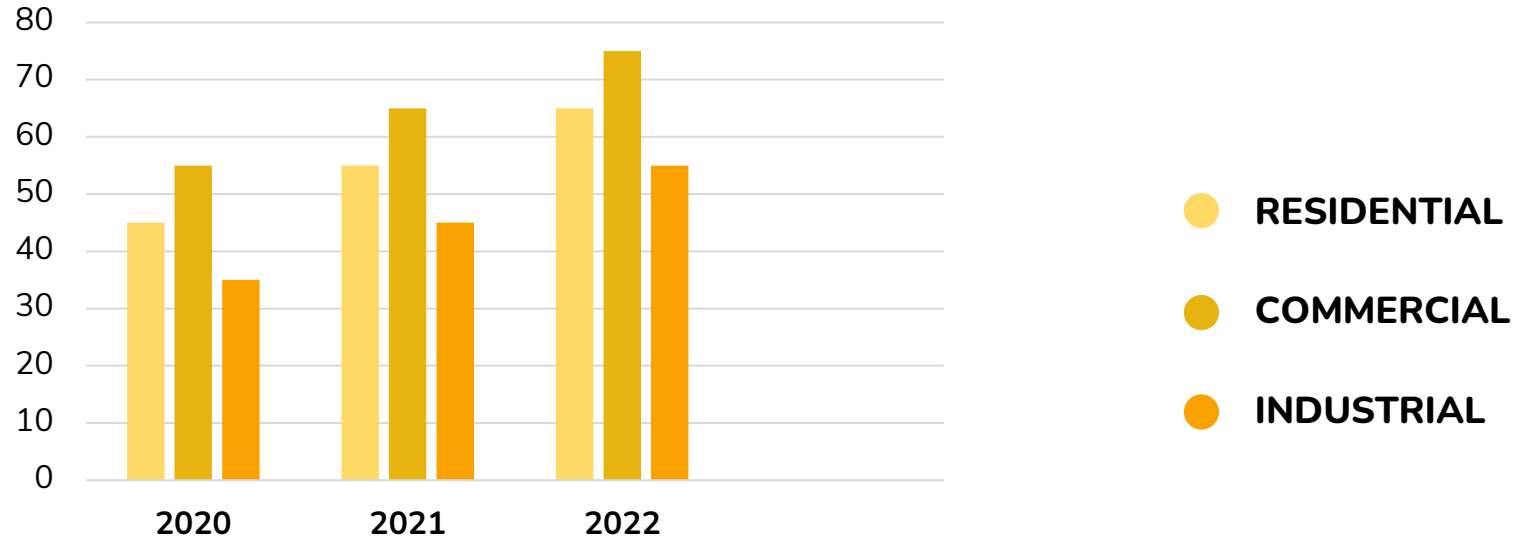


# RESIDENTIAL BUNGALOW AT BAVLA





## AREAS OF EXPERTISE





# +220,000

Sq. ft. area designed and constructed



# CONTACT

## Address

202-203, Sur Sarthi business management center, Behind  
Rudra complex, Ambawadi, Ahmedabad – 380 015.

## Phone

+91 98250-67115

## Email

[info@samshikhar.com](mailto:info@samshikhar.com)



[www.samshikhar.com](http://www.samshikhar.com)

*“Quality is remembered long after price is forgotten”*

*- Aldo Gucci*